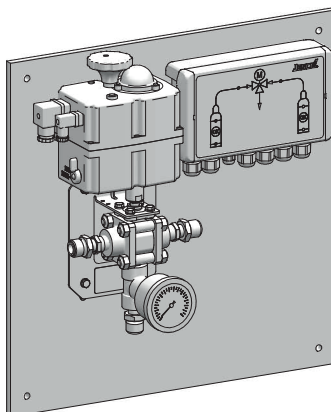


The independent one

Pressure chlorine changeover unit C 7524



Continuous gas supply

Chlorine gas dosing systems in a water treatment system must be permanently ready for operation so that the water can be sufficiently disinfected at any point. This explains the fitting of the systems with two supply batteries - one side in operation, the other on stand-by.

The pressure chlorine changeover unit effects automatic switching between the two cylinders or drum batteries.

The C 7524 is available as a plate-mounted design or a ready-to-use assembly kit.

Intuitive and automated

When the supply from the operating battery runs out, the pressure in the piping system sinks. The control recognises the chlorine shortage using the contact pressure gauge and activates the 3-way motor ball valve for the battery change.

The control monitors all operating modes and displays them in a self-explanatory fashion in a flow chart. Relay outputs are also available for the significant operating signals: Empty notification left and right, operating signal left and right and fault message.

Manual changeover can be triggered by the push of a button. The motor ball valve is fitted with hand-operated emergency actuation to enable changeover even following a power outage.

The residue discharge function can be activated on the control. This function resets at periodic intervals to the battery registered as empty following the changeover. In this way, any remaining residue is used from the chlorine cylinder, but the cylinder cannot permanently cover the chlorine requirements alone.

General

- Capacity range of up to 40 kg/h chlorine gas and up to 200 kg/h liquid chlorine
- Residue discharge (optional)
- Control with indication of operation
- 5 relays for remote signalling
- Manual changeover via key press

Model variants

Product	Max. flow rate		Hydraulic connections
	Chlorine gas	Liquid chlorine	
C 7524-20K	20 kg/hr	80 kg/hr	Threaded pin G5/8
C 7524-40K	40 kg/hr	200 kg/hr	1/2" NPT female thread Flange DN25 PN40 groove/spring compliant with EN 1092-1

Technical data

C 7524			
Throughput	C 7524-20K		gaseous: 20 kg/h Cl ₂ bei 3 bar liquid: 80 kg/h Cl ₂
	C 7524-40K		gaseous: 40 kg/h Cl ₂ bei 3 bar liquid: 200 kg/h Cl ₂
Operating pressure		bar	0 – 40
Contact pressure gauge		mm	Ø63, class 2.5
Setting range of the switching point on the contact pressure gauge		bar	1 – 13
Changeover time		s	22 approx.
Material in contact with the media			Steel, Monel, stainless steel, silver, nickel-plated brass, PTFE
Further materials			Coated steel, PP, ABS
Voltage supply			115 – 230 V AC ± 10%, 50/60 Hz
Protection class			IP65
Load capacity of the relay			max. 3 A / 250 V AC
Weight	without mounting plate	kg	7 (with flanges approx. 10)
	with mounting plate	kg	9 (with flanges approx. 12)
Ambient temperature		°C	0 – 55, no direct sunlight
Max. air humidity		%	90 non condensing

Scope of delivery

The C 7524 is available in two variations:

Plate-mounted changeover unit

- Operating ready
- 1.5 m power cord with Europlug
- Installation material for wall fixing

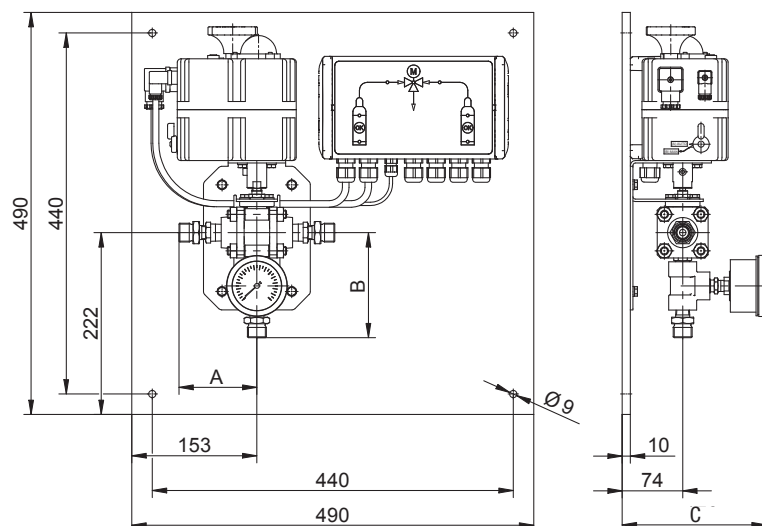
Assembly kit

- The motor ball valve and pressure gauge are fixed to the wall holder
- The connection cables are 2 m in length and ready-for-use
- 1.5 m power cord with Europlug
- Installation material for wall fixing

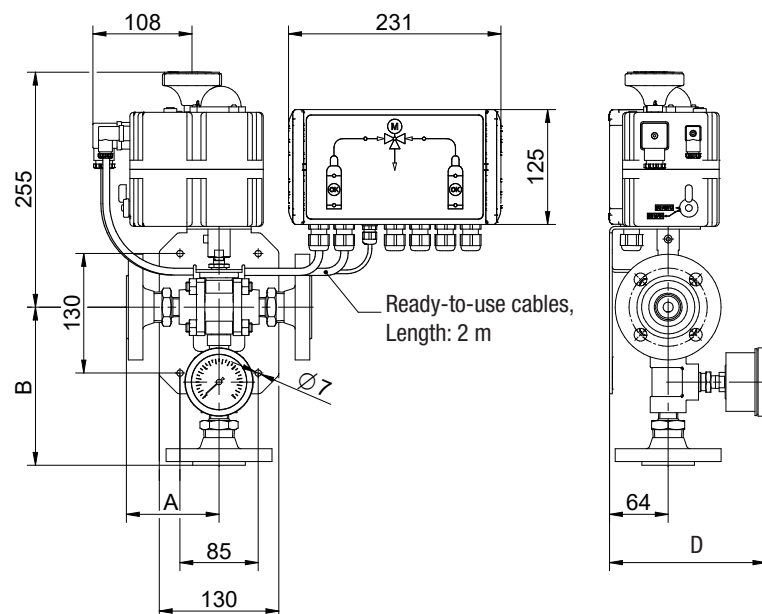
Dimensions

All dimensions in mm

C 7524 on mounting plate



C 7524 as assembly kit with flanges

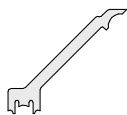


Power output	Input ØA and Output ØB	A	B	C*	D**
C 7524-20K	Threaded pin G5/8	95	128	~176	~166
	Threaded pin G3/4	95	128	~176	~166
	Threaded pin BSW 1"	97	130	~176	~166
	Threaded pin 1.030" x 14 NGO	95	128	~176	~166
C 7524-40K	Internal thread 1/2" NPT	44	95	~176	~166
	Flange DN25/PN40	99	167	~180	~170
	Inputs: with groove EN1092 Form D Output: with spring EN1092 Form C				

* for C 7524 on mounting plate

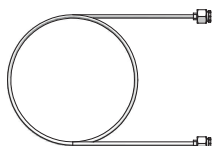
** for C 7524 as assembly kit without mounting plate

Accessories



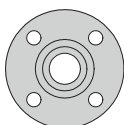
Setting tool

for limit switch in the servomotor



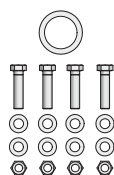
Flexible connection line

Connection: both sides with union nut G5/8 available in different lengths



Flange

- Flansch DN25/PN40 mit Feder (EN 1092 Form C) als Gewindeflansch mit 1" NPT innen oder Vorschweißflansch für Rohr Ø33,7 x 4 mm
- Flansch DN25/PN40 mit Nut (EN 1092 Form D) als Gewindeflansch mit 1" NPT innen oder Vorschweißflansch für Rohr Ø33,7 x 4 mm



Assembly accessories for flanges

- Screws
- Union nuts
- Disks
- Seal