

Conductivity Sensor

Conductive conductivity sensor for TOPAX LF1



EN

02

Supplement

To be held for future reference.

Conductive Conductivity Sensor (for TOPAX LF1)

Description

Standard sensor for registration of electrolytic conductivity.

Conductive measuring with two electrodes and with included temperature sensor Pt 100.

| Technical datas | |
|---|--|
| Material of sensor | PVDF |
| Material of electrode | Stainless steel (concentrically placed, 1.4571) |
| Electrical connector | 4-poligem Winkelstecker |
| Mechanica connection | PVDF-thread 3/4" |
| Temperature arrange | 0 ... 135 °C |
| Max. pressure | 16 bar (at 25 °C) 9 bar (at 60 °C) |
| Temperature-sensor | Pt 100 |
| Deliverable constants (c-values) | 0,05 /cm, 0,2 /cm, 1,0 /cm |
| Recommended measuring range | c = 0,05/cm ... 200 µS/cm c = 0,2/cm ... 2 mS/cm c = 1,0/cm ... 20 mS/cm |
| sensor length incl. connector | 186 mm |
| Installation depth, beginning at thread | 100 mm |
| Min. immersion depth | 60 mm |
| Shank diameter | 20 mm |

Tab. 1: Technical data

Dimensions

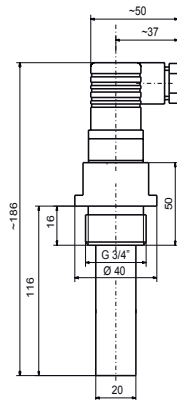


Fig. 1: Dimension sensor

Connection Table

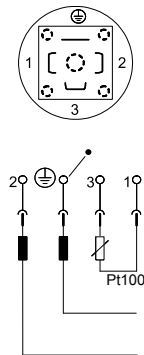


Fig. 2: Connection table of the sensor

Connector

The sensor will be delivered with a 4-pin angular connector (with screw connections) and without cable. The cable has to be ordered separately, must be 4 wired (Typ: LIYCY 4x0,5 mm) and max. 15 m in the length.

| Sensor | Sign | Color |
|---|--------|--------------|
| Inside electrode | 2 | white |
| Outside electrode | Ground | brown |
| Temperature sensor PT 100 (polarity free) | 1 / 3 | yellow/green |

Tab. 3: Cable information

1. Loosen the screw of the angular connector and remove it.
2. Take out the contact holder by pushing the corner between pin 1 and 3 with a screwdriver.
3. Loosen the PG-thread of the angular connector and mount the cable through the connector.
4. Remove the isolation of the cable and wires. Connect the cable (see fig. 2).

NOTE!

Don't connect the shield of the cable at the TOPAX LF controller!

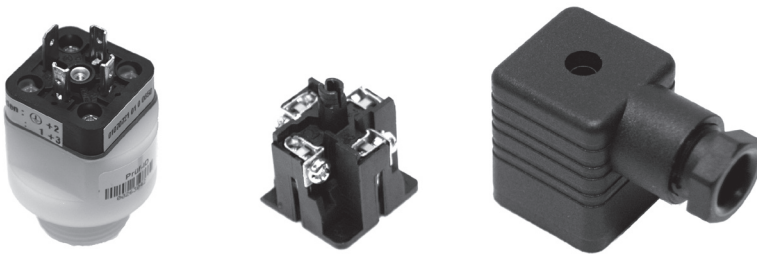


Fig. 3: Connectors of the sensor, contact holder and angular connector

| Product name | Order no. |
|--|-----------|
| Conductive Conductivity Sensor, up to 200 μ S/cm for TOPAX LF1 | 45000001 |
| Conductive Conductivity Sensor, up to 2 mS/cm for TOPAX LF1 | 45000002 |
| Conductive Conductivity Sensor, up to 20 mS/cm for TOPAX LF1 | 45000003 |

Tab. 2: Order information





Declaration of harmlessness

Please copy and send in with your device!
Please display anon the outer packaging!

Declaration of harmlessness

(please fill out a separate form for each appliance)

We forward the following device for repairs:

Type of device: _____

Part-no.: _____

Order-no.: _____

Delivery date: _____

Reason for repair: _____

Medium used: _____ Properties: irritant: yes/no
corrosive: yes/no

We hereby certify that the machine has been thoroughly cleaned inside and out before its dispatch and that it is free from health risk chemical, biological and radioactive materials as well as having been drained of oil. *)

If the manufacturer find it necessary to carry out further cleaning work, we accept the charge will be made to us.

We certify that the aforementioned information is correct and complete and that the unit is dispatched in compliance with legal requirements.

Company / address:

Phone:

Fax:

E-Mail:

Customer-number:

Contact person:

Date

Signature / stamp

*) If not applicable please cross out!

Warranty

Please copy and send with the device.

If the device breaks down within the period of warranty, please return it in a cleaned condition with the complete warranty application, filled out.

Sender

Company:..... Phone:..... Date:.....

Address:.....

Contact person:

Manufacturer order-no.: Delivery date:.....

Device type:..... Serial no.:

Nominal capacity/nominal pressure:

Description of fault:

.....

.....

Type of fault:

1. Mechanical fault

- premature wear
- wear parts
- breakage/other damage
- damage in transit

2. Electrical fault

- loose connections such as plug connector or cable
- operating elements (e.g., switches/buttons)
- electronics - corrosion

3. Leaks

- connections
- dosing head

4. No or inadequate function

- defective diaphragm
- other

Service conditions of the device

Point of use / system designation:.....

Accessories used (Suction line, etc.):.....

.....

.....

Commissioning (date):.....

Duty period (approx. operating hours):.....

Please describe the specifics of the installation and provide a simple diagram with details of the material, diameter, length and levels.



Lutz-Jesco GmbH

Am Bostelberge 19
30900 Wedemark
Germany

Phone: +49 5130 5802-0
Fax: +49 5130 5802-68
E-Mail: info@lutz-jesco.de
Internet: www.lutz-jesco.de

24h-Hotline: +49 5130 580 280

Austria

Lutz-Jesco GmbH

Aredstraße 7/2
2544 Leobersdorf
Austria

Phone: +43 2256 62180
Fax: +43 2256 6218062
E-Mail: info@lutz-jesco.at
Internet: www.lutz-jesco.at

Great Britain

Lutz-Jesco (GB) Ltd.

Gateway Estate
West Midlands Freeport
Birmingham B26 3QD
Great Britain

Phone: +44 121 782 2662
Fax: +44 121 782 2680
E-Mail: info-gb@jesco.de
Internet: www.lutz-jesco.de

Netherlands

Lutz-Jesco Nederland B.V.

Nijverheidstraat 14 C
2984 AH Ridderkerk
Netherlands

Phone: +31 180 499460
Fax: +31 180 497516
E-Mail: info@lutz-jesco.nl
Internet: www.lutz-jesco.nl

Hungary

Lutz-Jesco Üzetág

Vasvári P. u. 9.
9024 Győr
Hungary

Phone: +36 96 523046
Fax: +36 96 523047
E-Mail: info@lutz-jesco.hu
Internet: www.lutz-jesco.hu

USA

Lutz-JESCO America Corp.

55 Bermar Park
Rochester, NY 14624
USA

Phone: +1 585 426-0990
Fax: +1 585 426-4025
E-Mail: mail@jescoamerica.com
Internet: www.jescoamerica.com

East Asia

Lutz-Jesco
East Asia Sdn Bhd

Taman Perindustrian Jaya
47200 Petaling Jaya
Malaysia

Phone: +603 78454812
Fax: +603 78458413
E-Mail: info@lutz-jescoasia.com
Internet: www.lutz-jescoasia.com

Middle East

Lutz-Jesco Middle East FZE

P.O. Box 9614
SAIF-Free Zone Center
Sharjah
UAE

Phone: +971 6 5572205
Fax: +971 6 5572230
E-Mail: info@jescome.com
Internet: www.jescome.com



Best.-Nr. BB-45020-02-V02
Subject to technical changes
© Lutz-Jesco GmbH 11.2008
Printed in Germany