

Safe priming under difficult conditions

Priming aid ASH - siphon container



Safe priming

Dosing pumps from all manufacturers with a low pumping volume per stroke often prime poorly. The cause for these difficulties during start-up are dry valves and the large volume of air within the unfilled suction line and the dosing head.

The air which enters the suction line during container change or the gas which develops during the effervescence of the chemical in the suction line collects in the upper area of the priming aid, thus preventing entry into the dosing head. The dosing does not end. The priming aid requires periodic checks and refill.

The volume of gas in the priming aid has a flattening effect on the suction flow and prevents cavitation.

As the dosing pumps are fitted with a restricted suction lift, it can be expedient to install the suction line "above board" and to allow the fluid to siphon. To ensure that this siphoning actually occurs, and a positive pressure on the suction valve of the pump is set, we recommend the connection of a gas bubbling collection tank, also known as a "siphon container" at the highest point of the suction line with a large nominal width.

Technical data

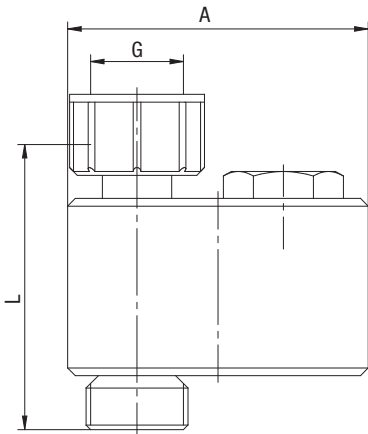
Functions

- Priming volume 65 ml – 5000 ml
- Material: PVC or PVC transparent
- FPM/EPDM seal
- Wall, container or pump fitting depending on the design
- Suitable for toxic and aggressive media
- Suitable for motor or solenoid dosing pumps

Priming aid ASH	65	95	250	3000	5000
Version	Priming aid PVC, seals FPM	Priming aid PVC transparent, seals FPM		Priming aid, PVC transparent, seals FPM / EPDM	
Installation	Connected suction side on the dosing pump	Wall mounting with clamps or container fitting with stand possible			
Connection sizes	G5/8, G3/4	Hose 4/6, 6/8	Hose 6/12	Glued socket Ø32	
Priming volume	65 ml	95 ml	250 ml	3000 ml	5000 ml

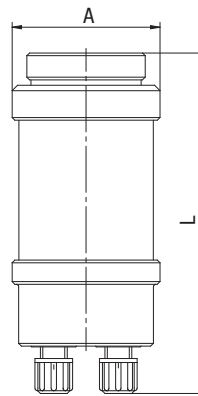
Dimensions

Priming aid ASH 65, PVC
All dimensions in mm



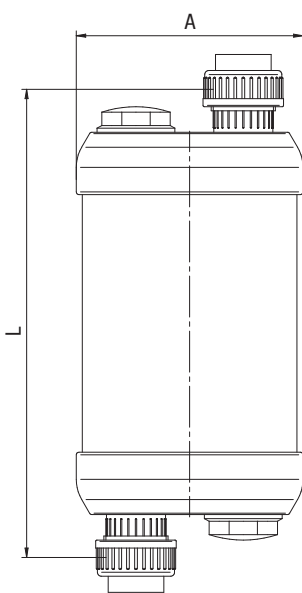
Type	G	Connection	A	L
ASH 65	G5/8	G5/8 male	Ø78	77
		Hose 4/6		77
		Hose 6/12		77
		Glued socket Ø10		77
		Glued socket Ø12		77
	G3/4	G5/4 exterior		76
		Hose 4/6		76
		Hose 6/12		76
		Glued socket Ø12		76

Priming aid ASH 95/250, PVC
All dimensions in mm



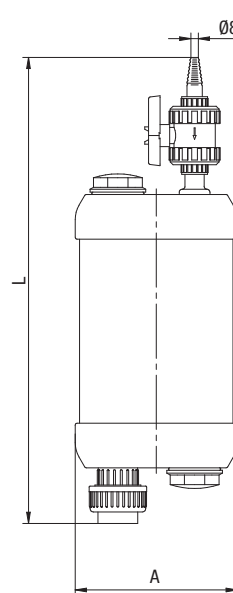
Type	Connection	A	L
ASH 95	Hose 4/6	Ø55	127
	Hose 6/8	Ø55	127
ASH 250	Hose 6/12	Ø70	185

Priming aid ASH 3000/5000, PVC
All dimensions in mm



Type	Connection	A	L
ASH 3000	Glued socket Ø32	Ø169	355
ASH 5000	Glued socket Ø32		475

Priming aid (siphon container)
All dimensions in mm



Type	Connection	A	L
Siphon container	Glued socket Ø32	Ø169	486