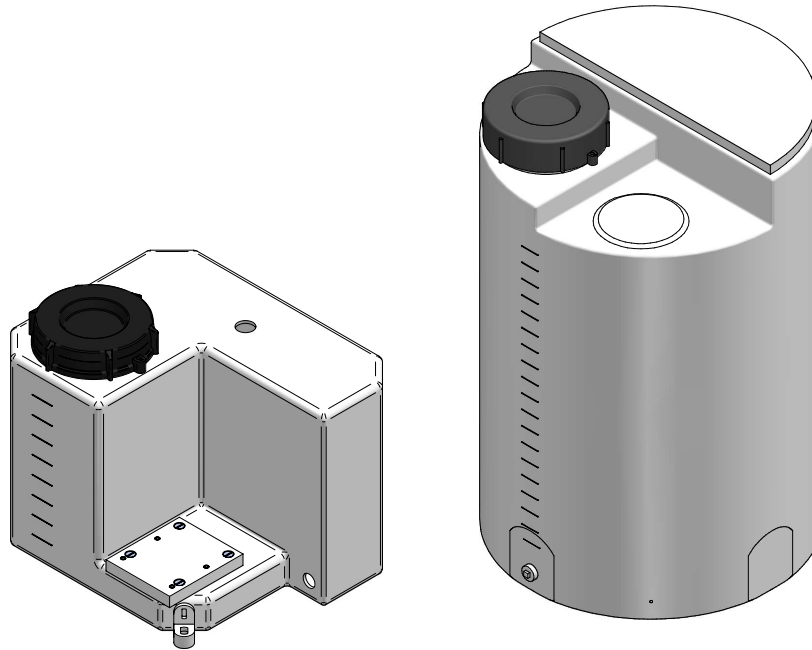


Safe dosing and storage

Dosing tank



Safe dosing and storage

Containers and catch basins are important components of dosing systems, for the safe dosing and storage of water-endangering liquids. Pre-prepared chemical tanks can be fitted with dosing pumps, valves and agitators directly.

The containers are manufactured from UV-stabilised polyethylene using the seamless rotation moulding procedure and are available in capacities of 35 – 1000 litres.

Temperature resistance up to 60° C is guaranteed. Threaded bushes are provided on the lower edge of the chemical tanks for optional fitting of mounting angles (included in the scope of delivery). These are recommended for securing the chemical tanks to mounting plates or base plates.

Gas-tight chemical tankser

There are two main reasons for designing gas-tight containers:

- Effervescence from aggressive, toxic or malodorous media must not be allowed to escape into the atmosphere.
- The medium in the tank must not come into contact with humid air entering from outside (e.g. sulphuric acid).

In the case of closed sintered tanks with screw caps, tightness is ensured automatically. To enable perfect emptying and filling, the tanks require sufficient ventilation to the atmosphere. This is achieved using special cartridges.

Scope of delivery

- Closed chemical tanks made of polyethylene natural or black
- Black screw cap with EPDM seal and additional FPM seal
- Flat spots to allow installation of valves
- A litre scale is sintered in
- Mounting hardware consisting of: Mounting angles, screws and washers (not with 35 l tanks)
- Moulded threaded sleeve G3/4 (not bored out) for emptying
- Option: Pre-prepared chemical tanks with mounting plate for mounting dosing pumps and valves

Avoiding ingress of humidity

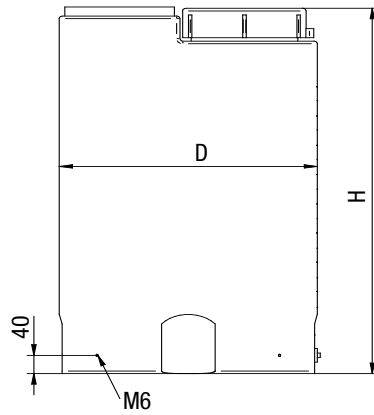
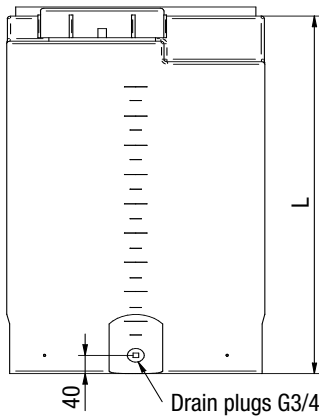
To prevent humid air from entering the tank, moisture-absorbing silica gel cartridges are used. Due to their fine-grain filling, silica gel cartridges are effective for the functions described above but still allow enough air to enter and escape to protect the tank against positive and negative pressure.

Avoiding effervescent media

Activated carbon cartridges are used to bind effervescent media. The harmful gases can be harmlessly absorbed for an extended period.

Dimensions

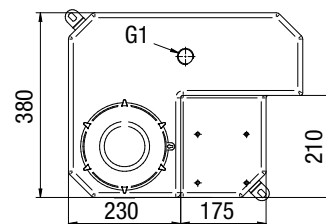
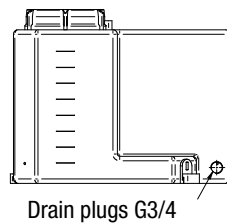
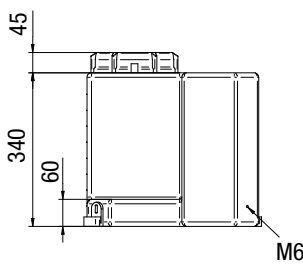
Tanks and dosing containers 35 l – 1000 l



Capacity	H	D	L
35 l	500	320	500
75 l	650	460	625
100 l	805	460	785
200 l	910	600	880
300 l	1060	670	1030
500 l	1210	790	1180
1000 l	1300	1100	1230

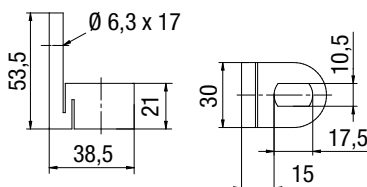
All dimensions in mm

Rectangular dosing container 45 l



All dimensions in mm

Mounting angle



All dimensions in mm

Accessories



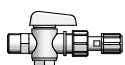
Welded-in sleeves

PE natural or PE black with cylindrical pipe internal thread



Threaded plug

PE natural, PE red or PE black for sealing tank sleeve sockets



Extraction unit

Consisting of: Extraction unit with stop valve and sealing kit FPM and EPDM



Key lock

Key lock for screw cap (not available for 35 l tanks)



Catch basins

Are available in all compatible sizes