

Product Information Booster Pump MVI

Negative pressure for Safety

Chlorine gas dosing systems in accordance with DIN 19606 are characterised by the fact that the chlorine gas to be dosed enters the piping, at a pressure below that of the atmospheric pressure. Possible leaks or loose seals allow the air to enter the system and do not cause the escape of chlorine gas. Booster pumps are used to produce the vacuum.

Guaranteed constant vacuum

The MVI booster pumps have been designed especially for use in chlorination installation according to DIN 19606. This standard specifies that chlorine gas must be dissolved in water under vacuum.

To produce the vacuum ejectors are used. The booster pumps ensure that a sufficient amount of motive water is supplied to the ejectors at the required pressure.

The booster pump is a multi-level vertical high pressure centrifugal pump with an "inline" design, i.e. suction and discharge connections are in a line.

In short

- Suitable for use in accordance with DIN 19606
- Flow rate up to 25 m³/h
- Pump housing pressure max. 16 bar
- Oval flange with internal thread
- All parts in contact with the media are corrosion resistant



Technical data

Flow rate	max. 25 m ³ /h
Pressure	max. 16 bar
Nominal power	max. 4 kW
Power consumption	max. 7.9 A
Delivery head	max. 82 m
Medium temperature	-15...+120 °C
Max. ambient temperature	40 °C
Voltage supply	3~ 400 V AC, 50 Hz*
Protection class	IP 55
Isolation class	F
Material	Cast iron, rust free steel, EPDM
Weight	max. 51.7 kg

* Design for 60 Hz upon request.

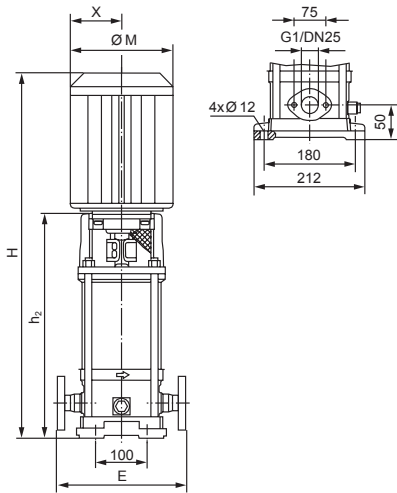
Model variants

Type	Ejector	Ejector-backpressure	Nominal power	Flow rate	Delivery head	Flange thread	Order no.
MVI 104	Typ A (max. 1 kg/h Cl ₂)	0.5 bar	0.55 kW	0.5 m ³ /h	37 m	G 1"	22900400
MVI 106		1.0 bar	0.75 kW	0.6 m ³ /h	56 m	G 1"	22900401
MVI 107		2.0 bar	0.75 kW	0.6 m ³ /h	65 m	G 1"	22900402
MVI 106	Typ B (max. 2.5 kg/h Cl ₂)	0.5 bar	0.75 kW	1.0 m ³ /h	52 m	G 1"	22900401
MVI 108		1.0 bar	0.75 kW	1.2 m ³ /h	68 m	G 1"	22900403
MVI 110		2.0 bar	1.1 kW	1.3 m ³ /h	82 m	G 1"	22900404
MVI 106	Typ E (max. 4 kg/h Cl ₂)	0.5 bar	0.75 kW	1.4 m ³ /h	50 m	G 1"	22900401
MVI 107		1.0 bar	0.75 kW	1.5 m ³ /h	57 m	G 1"	22900402
MVI 112		2.0 bar	1.1 kW	2.0 m ³ /h	80 m	G 1"	22900405
MVI 203	Typ C (max. 5 kg/h Cl ₂)	1.0 bar	0.55 kW	3.8 m ³ /h	16 m	G 1"	22900406
MVI 404		2.0 bar	1.1 kW	5.0 m ³ /h	32 m	G 1 1/4"	22900407
MVI 404	Typ C (max. 10 kg/h Cl ₂)	1.0 bar	1.1 kW	5.0 m ³ /h	32 m	G 1 1/4"	22900407
MVI 404		2.0 bar	1.1 kW	5.0 m ³ /h	32 m	G 1 1/4"	22900407
MVI 410	Typ C (max. 15 kg/h Cl ₂)	1.0 bar	2.2 kW	6.0 m ³ /h	65 m	G 1 1/4"	22900408
MVI 410		2.0 bar	2.2 kW	6.0 m ³ /h	65 m	G 1 1/4"	22900408
MVI 805	Typ D (max. 25 kg/h Cl ₂)	1.0 bar	1.85 kW	12.9 m ³ /h	26 m	G 1 1/2"	22900409
MVI 1603-6		2.0 bar	2.2 kW	14.9 m ³ /h	26 m	G 2"	22900410
MVI 1606-6	Typ D (max. 40 kg/h Cl ₂)	1.0 bar	4.0 kW	16.0 m ³ /h	53 m	G 2"	22900411
MVI 1606-6		2.0 bar	4.0 kW	16.0 m ³ /h	53 m	G 2"	22900411

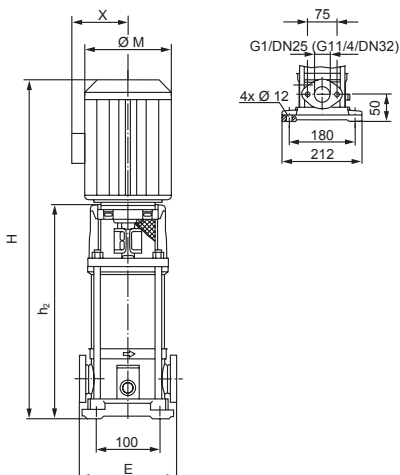
Accessories

Mounting kit for booster pumps		Order no.
G 1, DN 25	Shutoff valves (2x), non-return valve, pressure gauge 0...16 bar and PVC cemented sleeve	22913859
	like 22913859, but in brass	22900013
	Shutoff valves (2x) with reducers	22900012
G 1 1/4, DN 32	Shutoff valves (2x), non-return valve, pressure gauge 0...16 bar and PVC cemented sleeve	22928832
	Shutoff valves (2x) with reducers	22900033
G 1 1/2, DN 40	Shutoff valves (2x), non-return valve, pressure gauge 0...16 bar and PVC cemented sleeve	22900031
	Shutoff valves (2x) with reducers	22900034
G 2, DN 50	Shutoff valves (2x), non-return valve, pressure gauge 0...16 bar and PVC cemented sleeve	22900032
	Shutoff valves (2x) with reducers	22900035
	Wall bracket made from stainless steel for G 1 and G 1 1/4	22900017
	Wall bracket made from stainless steel for G 1 1/2 and G 2	22900036

Dimensions

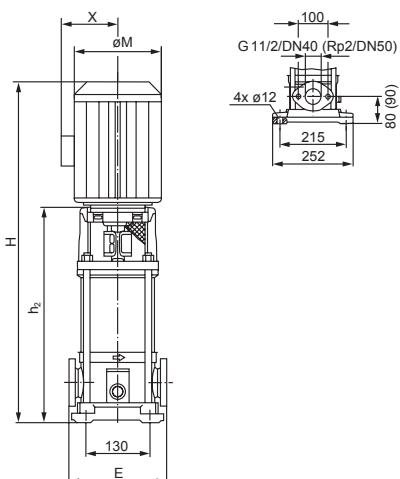


Type	E	H	h ₂	Ø M	X
MVI 104	204	528	305	140	118
MVI 106	204	598	355	170	127
MVI 107	204	618	375	170	127
MVI 108	204	658	415	170	127
MVI 110	204	678	435	170	127
MVI 112	204	718	475	170	127



Type	E	H	h ₂	Ø M	X
MVI 203	204	519	296.5	140	118
MVI 404	204	574	330.5	170	127
MVI 410	204	751	484.5	193	151

Bracket measurements are valid for the booster pumps MVI 404 and MVI 410



Type	E	H	h ₂	Ø M	X
MVI 805	250	714	434	193	151
MVI 1603-6	250	712	445.5	193	151
MVI 1606-6	250	827	531.5	217	160

Bracket measurements are valid for the booster pumps MVI 1603-6 and MVI 1606-6

All measurements are given in mm

Product Information Booster Pump MVI

Performance curves

