

General

Containers and catch basins are important components of dosing systems, for the safe dosing and storage of water-endangering liquids. Pre-prepared chemical tanks can be fitted with dosing pumps, valves and agitators directly.

The containers are manufactured from UV-stabilised polyethylene using the seamless rotation moulding procedure and are available in capacities of 35-1000 litres.

The collecting pans are available in all compatible sizes.

Scope of delivery:

- Closed chemical tanks made of polyethylene natural or black
- Black screw cap with EPDM seal and additional FPM seal
- Flat spots to allow installation of valves
- A litre scale is sintered in
- Mounting hardware consisting of: Mounting angles, screws and washers (not with 35 l tanks)
- Moulded threaded sleeve G3/4 (not bored out) for emptying
- Option: Pre-prepared chemical tanks with mounting plate for mounting dosing pumps and valves

Temperature resistance up to 60 °C is guaranteed. Threaded bushes are provided on the lower edge of the chemical tanks for optional fitting of mounting angles (included in the scope of delivery). These are recommended for securing the chemical tanks to mounting plates or base plates.

Gas-tight chemical tanks

There are two main reasons for designing gas-tight containers:

1. Effervescence from aggressive, toxic or malodorous media must not be allowed to escape into the atmosphere.
2. The medium in the tank must not come into contact with humid air entering from outside (e.g. sulphuric acid).

In the case of closed sintered tanks with screw caps, tightness is ensured automatically.

To enable perfect emptying and filling, the tanks require sufficient ventilation to the atmosphere. This is achieved using special cartridges.

Avoiding effervescent media

Activated carbon cartridges are used to bind effervescent media. The harmful gases can be harmlessly absorbed for an extended period.

Avoiding ingress of humidity

To prevent humid air from entering the tank, moisture-absorbing silica gel cartridges are used. Due to their fine-grain filling, activated carbon and silica gel cartridges are effective for the functions described above but still allow enough air to enter and escape to protect the tank against positive and negative pressure.



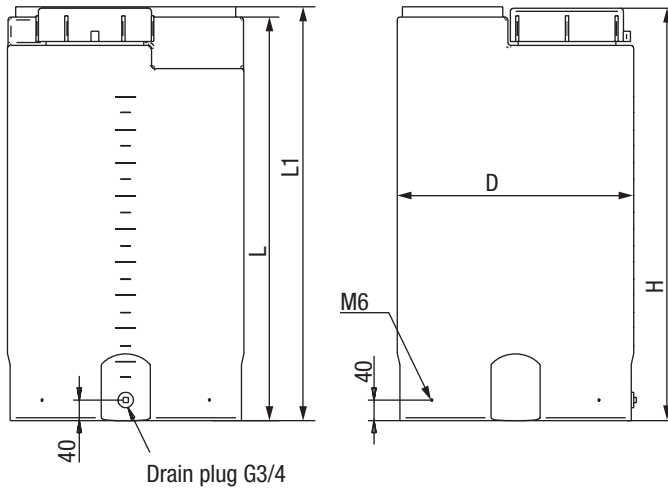
Chemical tank on mounting plate

Depending on the operation to be performed or the specific nature of the medium, it is advisable to assemble the dosing pump in front of the chemical tank (the dosing pump is set to feed). To ensure that the dosing station can be largely pre-assembled, we recommended mounting the chemical tank together with the dosing pump tank on a common mounting plate.

Tanks and Collecting Pans

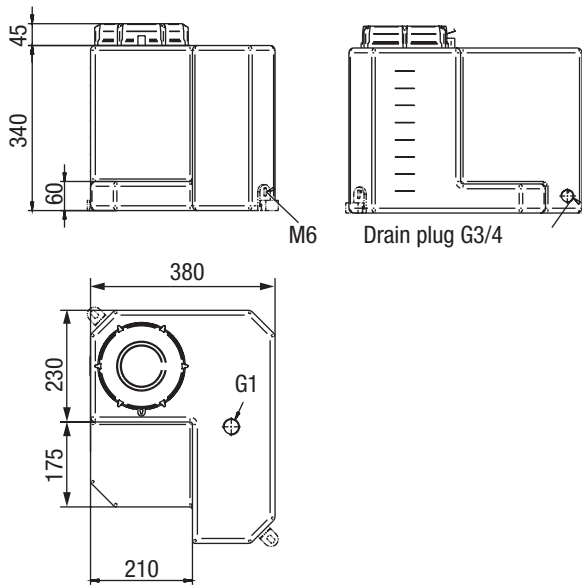
Dimensioned drawings

Tanks and Chemical Tanks 35 l - 1000 l, all data in mm

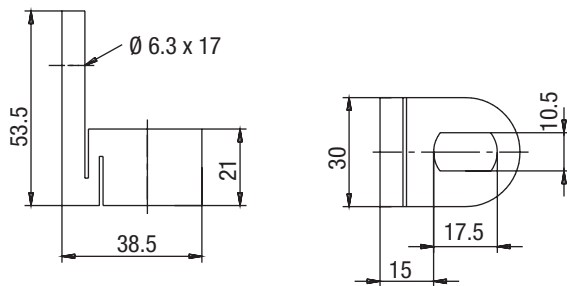


Capacity	H	D	L	L1
35 l	520	320	500	520
75 l	650	460	625	645
100 l	805	460	785	805
200 l	910	600	880	900
300 l	1060	670	1030	1050
500 l	1210	790	1180	1200
1000 l	12500	1100	1230	1250

Rectangular chemical tank 45 l, all data in mm



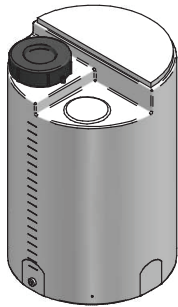
Mounting angle, all data in mm



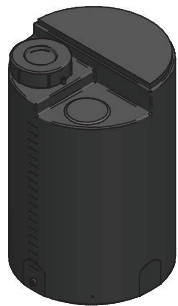
Chemical tanks Pre-prepared for mounting valves

Scope of delivery:

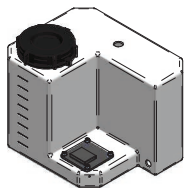
- Closed chemical tanks made of natural or black polyethylene
- Black screw cap with EPDM seal and additional FPM seal
- Flat spots to allow installation of valves
- A litre scale is sintered in
- Mounting hardware consisting of:
 - Mounting angles, screws and washers (not with 35 l tanks)
- Moulded threaded sleeve G3/4 (not bored out) for emptying
- Pre-prepared chemical tanks with mounting plate for mounting dosing pumps and valves



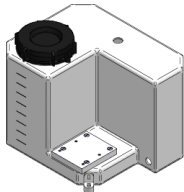
Chemical tank	Capacity	Height*	Diameter	Part No.
PE natural	35 l	520 mm	320 mm	12039441
* Height of the mounting plate	75 l	645 mm	460 mm	12039442
	100 l	805 mm	460 mm	12039443
	200 l	900 mm	600 mm	12039444
	300 l	1050 mm	670 mm	12039445
	500 l	1200 mm	790 mm	12039446
	1000 l	1250 mm	1100 mm	12039447



Chemical tank	Capacity	Height*	Diameter	Part No.
PE black	35 l	520 mm	320 mm	12039456
for light-sensitive media	75 l	645 mm	460 mm	12039457
* Height of the mounting plate	100 l	805 mm	460 mm	12039458
	200 l	900 mm	600 mm	12039459
	300 l	1050 mm	670 mm	12039460
	500 l	1200 mm	790 mm	12039461
	1000 l	1250 mm	1100 mm	12039462



Chemical tank	Capacity	Dimensions W x D x H	Part No.
PE natural	45 l	480 mm x 380 mm x 385 mm	12039463
For pump types: MAGDOS LT 02 - LT 17			

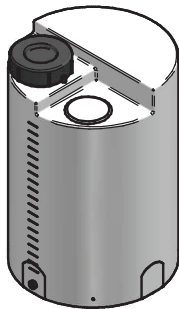


Chemical tank	Capacity	Dimensions W x D x H	Part No.
PE natural	45 l	480 mm x 380 mm x 385 mm	12039464
For pump types: MAGDOS LB, LD, LK and LP			

Storage tanks

Scope of delivery:

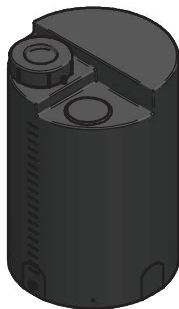
- Closed storage tanks made of natural or black polyethylene
- Black screw cap with EPDM seal and additional FPM seal
- Flat spots to allow installation of valves
- A litre scale is sintered in
- Mounting hardware consisting of:
 - Mounting angles, screws and washers (not with 35 l tanks)
- Moulded threaded sleeve G3/4 (not bored out) for emptying


Storage tanks

PE natural

* Highest point of the tank

Capacity	Height*	Diameter	Part No.
35 l	500 mm	320 mm	39441
75 l	650 mm	460 mm	39442
100 l	805 mm	460 mm	39443
200 l	910 mm	600 mm	39444
300 l	1060 mm	670 mm	39445
500 l	1210 mm	790 mm	39446
1000 l	1300 mm	1100 mm	39447


Storage tank

 PE black
for light-sensitive media

* Highest point of the tank

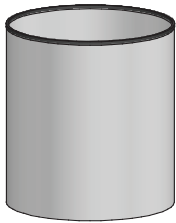
Capacity	Height*	Diameter	Part No.
35 l	500 mm	320 mm	39456
75 l	650 mm	460 mm	39457
100 l	805 mm	460 mm	39458
200 l	910 mm	600 mm	39459
300 l	1060 mm	670 mm	39460
500 l	1210 mm	790 mm	39461
1000 l	1300 mm	1100 mm	39462

Catch basins

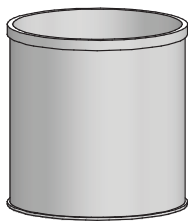
For the safe dosing and storage of water-endangering liquids.

Available in three versions:

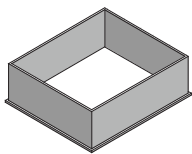
- As a polyethylene collecting pan
 manufactured using the seamless rotation moulding procedure
 Colour: Natural
 Flat spots to allow installation of valves
 A litre scale is sintered in
- As a polypropylene collecting pan, welded
 Colour: grey
- Rectangular collecting pan made of plastic with PE grating



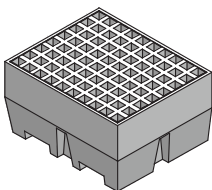
Collecting pan PE natural	Capacity	Height	Diameter (inside)	Part No.
	35 l	400 mm	412 mm	12000136
	75 l	540 mm	502 mm	12000130
	100 l	700 mm	502 mm	12000131
	200 l	730 mm	640 mm	12000132
	300 l	960 mm	758 mm	12000133
	500 l	980 mm	848 mm	12000134
	1000 l	1080 mm	1136 mm	12000135



Collecting pan PE grey	Capacity	Height	Diameter (inside)	Part No.
	35 l	340 mm	500 mm	12000102
	75 l	340 mm	500 mm	12000102
	100 l	500 mm	580 mm	12000103
	200 l	700 mm	650 mm	12000104
	300 l	790 mm	880 mm	12000105
	500 l	750 mm	950 mm	12000106
	1000 l	900 mm	1200 mm	12000107



Collecting pan PP grey suitable for rectangular tank 45 l	Capacity	Dimensions W x D x H	Part No.
	60 l	600 mm x 520 mm x 200 mm	12000101



Collecting pan PE blue with grating	Capacity	Dimensions W x D x H	Part No.
	240 l	910 mm x 760 mm x 500 mm	12000121

Accessories for Tanks

Welded-in Sleeves, Threaded Plugs, Seals


**Welded-in sleeve
PE natural**

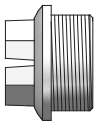
 with cylindrical pipe -
internal thread

Internal thread	Nominal width	Diameter (outside)	Part No.
G1/2	DN 15	43 mm	29393
G3/4	DN 20	49 mm	19705
G1	DN 25	56 mm	19592
G1 1/4	DN 32	67 mm	19308
G1 1/2	DN 40	73 mm	19307
G2	DN 50	86 mm	19593


**Welded-in sleeve
PE black**

 with cylindrical pipe -
internal thread

Internal thread	Nominal width	Diameter (outside)	Part No.
G1/2	DN 15	43 mm	92043
G3/4	DN 20	49 mm	39480
G1	DN 25	56 mm	39481
G1 1/4	DN 32	67 mm	39867
G1 1/2	DN 40	73 mm	39851
G2	DN 50	86 mm	39868


**Threaded plug
PE red or natural**

 for closing
tank sleeve sockets

Male thread

for tank sleeve socket	Nominal width	Diameter (outside)	Part No.
G1/2	DN 15	27.2 mm	88701
G3/4	DN 20	32.3 mm	88702
G1	DN 25	40.0 mm	88703
G1 1/4	DN 32	50.4 mm	88704
G1 1/2	DN 40	55.4 mm	88705
G2	DN 50	68.4 mm	88706

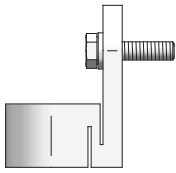

**FPM seal
for PE threaded plugs**

for threaded plugs	Part No.
G1/2	80012
G3/4	80053
G1	80759
G1 1/4	80030
G1 1/2	80176
G2	80741


**EPDM seal
for PE threaded plugs**

for threaded plugs	Part No.
G1/2	80105
G3/4	80139-KP
G1	80115
G1 1/4	80175-KP
G1 1/2	80177-KP
G2	80742

Accessories for tanks Mounting set



Mounting set
(not available for 35 l containers)

for round tanks consisting of:

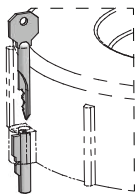
- 4x mounting angle/s made of polypropylene, white
- 4x screws
- 4x washers

for rectangular tanks consisting of:

- 2x mounting angles made of polypropylene, white
- 2x screws
- 2x washers

Mounting set	Mounting set for	Part No.
	Round tank	39463
	Rectangular tank	39873

Accessories for tanks Key lock



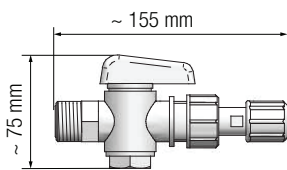
Key lock for screw cap
(not available for 35 l tanks)

Consisting of:

- Key lock
- 1 key

Key lock including key	Part No.
for chemical tanks	27451

Accessories for tanks Extraction unit



Extraction unit

Consisting of:

- Extraction unit with stop valve
- FPM and EPDM seal assembly

Extraction unit	Screw-in thread (outside)	Connection for Tube	Part No.
	G3/4	4/6 mm	12224873
	G3/4	6/12 mm	12224872

Declaration of Harmlessness

Please fill out a separate form for each appliance!

We forward the following device for repairs:

Device and device type: Part-no.:

Order No.: Date of delivery:

Reason for repair:
.....
.....

Dosing medium

Description: Irritating: Yes No

Properties: Corrosive: Yes No

We hereby certify, that the product has been cleaned thoroughly inside and outside before returning, that it is free from hazardous material (i.e. chemical, biological, toxic, flammable, and radioactive material) and that the lubricant has been drained.

If the manufacturer finds it necessary to carry out further cleaning work, we accept the charge will be made to us.

We assure that the aforementioned information is correct and complete and that the unit is dispatched according to the legal requirements.

Company / address: Phone:

..... Fax:

..... Email:

Customer No.: Contact person:

Date, Signature:

Warranty Application

Please copy and send it back with the unit!

If the device breaks down within the period of warranty, please return it in a cleaned condition with the complete warranty application, filled out.

Sender

Company: Phone: Date:

Address:

Contact person:

Manufacturer order no.: Date of delivery:

Device type: Serial number:

Nominal capacity / nominal pressure:

Description of fault:.....

.....
.....
.....
.....
.....
.....
.....
.....
.....
.....

Service conditions of the device

Point of use / system designation:.....

.....
.....

Accessories used (suction line etc.):.....

.....
.....
.....
.....

Commissioning (date):

Duty period (approx. operating hours):

Please describe the specific installation and enclose a simple drawing or picture of the chemical feed system, showing materials of construction, diameters, lengths and heights of suction and discharge lines.