

General

The isolating valves are derived from the pressure loading and relief valves shown in MB 1 25 01. The result is reduced inventory for a whole series of spare parts, and greater flexibility in service.

The isolating device is a flat diaphragm which is pressed over the hand-wheel, the spindle and the diaphragm disc on the seat. These valves are completely leak-proof.

Selection

The selection criteria are:

1. Flow rate
2. Pressure
3. Permissible pressure drop in valve
4. Aggressiveness of the medium
5. Temperature of the medium
6. Type of connection

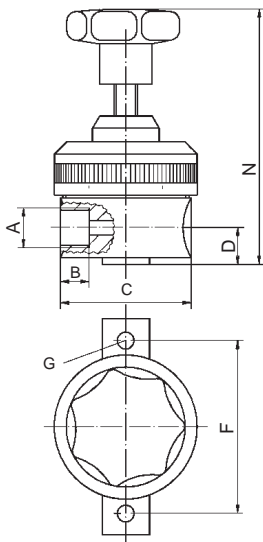
Flow rate

The flow rate shown in the selection table applies to a constant flow of water and similar liquids, with reference to viscosity and density, as obtained with centrifugal pumps or reciprocating metering pumps fitted with an adequate pulsation dampener.

If the flow is not constant (metering pumps with no pulsation dampener), the pump output should be multiplied by 2 to 3 before selecting the fitting.



Dimensions



DN	A	B	C	D	N	F	ø G
					approx.		
6	G1/4	10	40	23	102	46,5	4,5
10	G3/8	12	55	19	107	72	7
15	G1/2	16	75	22	102	92	7

Valves selection table PN 10

Q* l/h	DN	Housing / Diaphragm Material		
		PVC/ PTFE	PVDF/ PTFE	1.4571/ PTFE
75	6	12431985	12431986	12431987
200	10	12431988	12431989	12431990
500	15	12431991	12431992	12431993

*refer to paragraph on "Flow rate"

Connection selection table

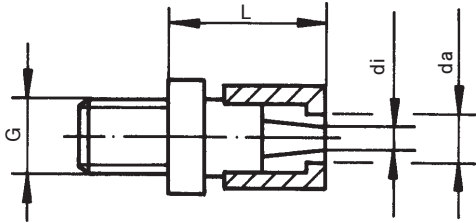


Fig. A Hose clamp connection

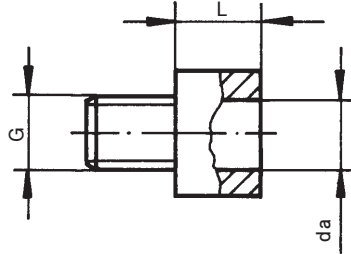


Fig. C solvent-cement jointed pipe connection

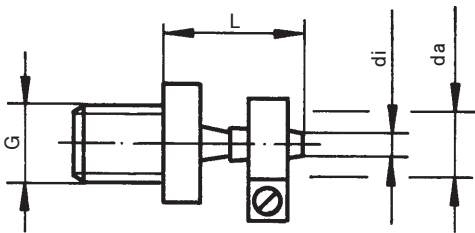


Fig. B Hose clip connection

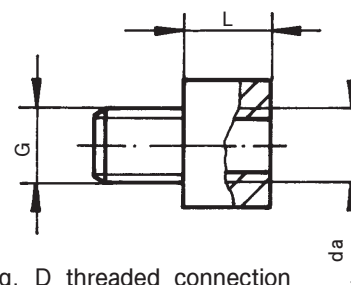


Fig. D threaded connection

Conn. G	DN	Pipe connection			PVC			stainless steel		
		L	di	da	Fig. A	Fig. B	Fig. C	Fig. B	Fig. D	
G 1/4	6	22	4	6	28125**	—	—	—	—	
		35	6	8	26489	—	—	—	—	
		24	6	8	—	—	—	26494	—	
		44	6	12	26487*	—	—	—	—	
		24	6	12	—	—	—	26495	—	
		20	—	8	—	—	—	26497	—	—
		20	—	10	—	—	—	18995	—	—
G 3/8	10	18	—	12	—	—	21839	—	—	
		35	9	15	—	32462	—	—	—	
		32	9	15	—	—	—	26500	—	
		18	—	12	—	—	82901	—	—	
		18	—	16	—	—	82902	—	—	
		18	—	20	—	—	82900	—	—	
G 1/2	15	28	—	G 1/2	—	—	—	—	82956	
		43	16	26	—	32461	—	—	—	
		55	16	26	—	—	—	29376	—	
		20	—	16	—	—	18932	—	—	
		21	—	20	—	—	19143	—	—	
		25	—	25	—	—	19581	—	—	
		30	—	G 3/4	—	—	—	82135		

* Part no. 29796 also available in PVDF

** Part no. 28125 made of PPH